

TECHNICAL SPECIFICATION

4,5 mm acoustic insulation rolls, made of SBR (Stirene Butadiene Rubber) fibres and granules rubber, compacted using a latex binder in a hot process. A black synthetic, 90 g/m² non woven anti-stretch backing is applied on one side. The dimensions of the roll are: 10 m length, 104 cm width including 4 cm side border for rolls overlapping during installation. The total mass surface is 1,00 kg/m² and dynamic stiffness (s') is 33 MN/m³.



Other versions:

WP (waterproof non woven anti-stretch backing) - AD (adhesive waterproof non woven anti-stretch backing)

PHYSICAL CHARACTERISTICS	Standard	Unit	BASEWOOD	Tolerance
Thickness ⁽¹⁾	EN 12431	mm	4,5	± 10%
Length	EN 822	m	10,00	± 3%
Width (including 4 cm overlapping band)	EN 822	m	1,04	± 0,8%
Backing superficial weight	EN 13859-1	g/m ²	90	± 5%
Superficial weight	EN 1602	kg/m ²	1,00	± 10%
Colour			black	

ACOUSTIC CHARACTERISTICS	Standard	Unit	BASEWOOD	Tolerance
Dynamic stiffness (dry application) ⁽²⁾	EN 29052-1	MN/m ³	33	± 2
Impact sound pressure level attenuation ΔLw laboratory test ⁽³⁾	EN ISO 10140 EN ISO 717-2	dB	≥ 20	

ACOUSTIC CHARACTERISTICS	Standard	Unit	BASEWOOD	Tolerance
Compressibility c	EN 12431	mm	≤ 1,1	
Castor chair test ⁽⁴⁾	EN 425	cycles	≥ 25.000	
Thermal conductivity coefficient λ	EN 12667	W/m K	0,099	
Water vapour diffusion resistance factor μ	EN 12086		10,0	
Water vapour trasmission Sd	EN 12086	m	0,05	
Fire grade	EN 13501-1		F	

PACKING AND STORING

Each pallet is wrapped and protected with waterproof polythene film. Inside storage is necessary to avoid possible wet storing.

NOTES

⁽¹⁾ Product thickness measured according to norm EN 12431 equal to the value of "Thickness under load dB (50 kPa → 2 kPa)"

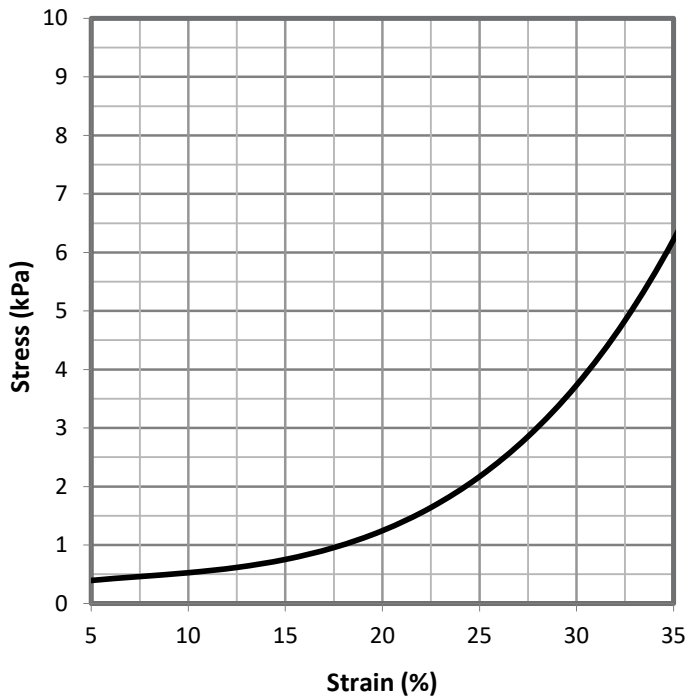
⁽²⁾ Measurement executed in deviation from norm EN 29052-1, without applying plaster on the test sample

⁽³⁾ Isolgomma Laboratory test; floating parquet sp. 14 mm on Basewood. Concrete slab, thickness 140 mm

⁽⁴⁾ Test with laminate flooring thickness 11 mm on Basewood

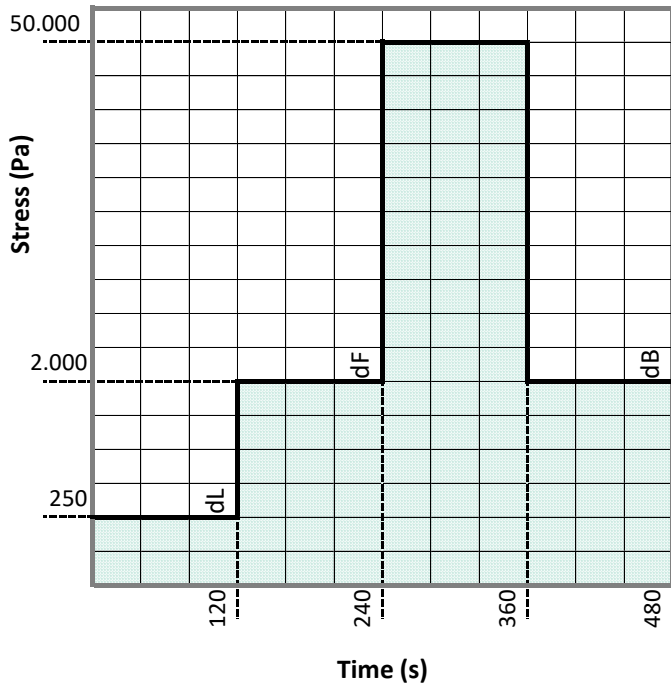
The suggestions and technical information given above represent our knowledge regarding the properties and the product's uses. ISOLGOMMA reserve the right to modify or update this data without prior notice. This document is the property of ISOLGOMMA and all rights are therefore reserved.

COMPRESSION BEHAVIOR - EN 826



	Unit	σ_{10}	Tolerance
BASEWOOD	kPa	$\geq 0,5$	

THICKNESS AND COMPRESSIBILITY - EN 12431



	Unit	dL	dF	dB	Tolerance
BASEWOOD	mm	5,3	4,5	4,2	$\pm 10\%$

INSTALLATION INSTRUCTIONS



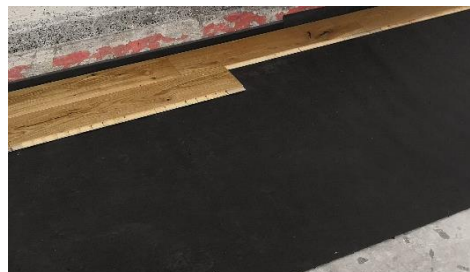
Apply the adhesive strip to the wall with particular attention in the corners



Install the acoustic mat with rubber granules facing down



Seal the roll jointing borders with Isolgamma Stik tape



Start the dry installation of flooring



Complete the installation of flooring



Cut the exceeding part of the edging strip